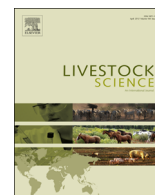




Contents lists available at [ScienceDirect](http://www.sciencedirect.com)

Livestock Science

journal homepage: www.elsevier.com/locate/livsci



Heat stress affects reproductive performance of high producing dairy cows bred in an area of southern Apennines

Q1 R. Boni*, L.L. Perrone, S. Cecchini

Department of Sciences, University of Basilicata, Via dell'Ateneo Lucano, 10, 85100 Potenza, Italy

ARTICLE INFO

Article history:

Received 29 August 2013

Received in revised form

18 November 2013

Accepted 20 November 2013

Keywords:

Bovine

Heat stress

Calving interval

Temperature–humidity index

Economic loss

ABSTRACT

A 5-year retrospective (from 2008 to 2012) survey was carried out by analyzing data of high producing dairy cows reared in farms located in an area of southern Apennines. The indicators of fertility obtained were related to either season variations or temperature–humidity index (THI). Conceptions were evaluated per month on an annual basis (NCY), i.e., a parameter obtained by subtracting gestation length to the calving date. A significant reduction of NCY was found during the summer months; furthermore, this parameter decreased along with THI increase. The number of heats detected varied similarly to NCY and represented the main cause of lower fertility consequent to heat stress (HS). The age at first calving was not significantly affected by either the season or the THI. The mean number of AI/pregnancy in relation to the calving date was significantly affected by the season but it was not related to THI. The number of days open was significantly larger in the animals calved from January to July than from August to December (163 ± 33 vs 123 ± 36 days; $P < 0.001$); this causes an annual economic loss of several thousand euro in each farm analyzed. In conclusion, HS causes severe economic loss in dairy farms located in southern Apennines that is mainly due to a lower number of heats detected as well as to a larger number of days open and semen doses used.

© 2013 Published by Elsevier B.V.

1 Introduction

Declining productive and reproductive performance of livestock in tropical and subtropical areas is a well-known phenomenon that limits high production dairy cattle breeding (Gauly et al., 2013; Kadzere et al., 2002). Global warming and the breeding of selected animals that are more and more sensitive to environmental effects have made this phenomenon, named heat stress (HS), particularly relevant even in temperate areas (Ferreira, 2013; Nardone et al., 2010). The origin of HS comes from the attempt to counteract hyperthermia induced by the high environmental temperature using mechanisms of thermal dispersion. These mechanisms are, however, also influenced

by other input variables, such as relative humidity, ventilation, radiant energy and rainfall (Igono et al., 1992). Complex indexes, which combine some of the above climate parameters involved, have been proposed to monitor the effects of HS. The temperature–humidity index (THI), that combines the maximum temperatures with the minimum relative humidity, is the most used one (Ravagnolo and Misztal, 2000).

The infertility caused by the HS is due to both direct and indirect causes that affect reproductive performance. In particular, HS may act directly by reducing the quality of the gametes. In the male, there is an increase of oligoastheno-teratospermia (Meyerhoeffer et al., 1985). In the female, several alterations are described either in the processes of folliculogenesis, as prolongation of follicle dominance and co-dominance phenomena (Badinga et al., 1993; Wolfenson et al., 1995) with a significant reduction in follicular estradiol (Badinga et al., 1994), or luteogenesis,

* Corresponding author. Tel.: +39 0971 205017.

E-mail address: raffaele.boni@unibas.it (R. Boni).

as well as a delayed luteolysis (Wilson et al., 1998b) and a compromised luteal activity during the postpartum period (De Rensis et al., 2008). The follicle and oocyte maturation are compromised and the mature oocyte has a reduced competence for fertilization and embryonic development (Mihm et al., 1994; Rispoli et al., 2011; Roth, 2008). Lowering of the estrogen levels by the growing follicles translates into a lower intensity of estrous signs (Badinga et al., 1994). This latter finding has been recently challenged by novel considerations on the role of GnRH in the control of estrus behavior in ruminants (Caraty et al., 2002). The decrease of GnRH levels during stress (Smith and Dobson, 2002) suggested a possible involvement of GnRH in decreasing estrus behavior signs in cows during the HS (van Eerdenburg, 2008b).

The reproductive failures attributable to HS involve follicular growth and oocyte function even before the antral phase (42 days) or primary follicle (85 days) (Lussier et al., 1987; Picton et al., 1998; Torres-Junior et al., 2008) and are prolonged up to two or three estrous cycles from the end of the high environmental temperature (Roth et al., 2001). These effects are reduced with the progress of the embryo-fetal development (Biggers et al., 1987). Indirect effects due to HS may consist in a reduction of dry matter intake, which is responsible for deepening and extension of the negative energy balance postpartum that results in a decreased fertility (Lucy et al., 1992).

Further problems related to HS are attributable to an increase of some reproductive diseases, such as ovarian cysts (Lopez-Gatius, 2003). Dairy cows with high productive performance are more sensitive to environmental effects (Kadzere et al., 2002) and HS causes a decrease of sexual cyclicity and increases the incidence of inactive ovaries (Lopez-Gatius, 2003).

Several techniques have been proposed in order to counteract the effects of HS on reproductive activity, as the use of awnings, showers, fans (Hansen and Arechiga, 1999; Kendall et al., 2006; West, 2003); however, these strategies can alleviate the productive inefficiency without solving reproductive failures. New strategies to combat infertility are geared to accelerate the follicle renewal by hormonal treatments or ovum pick-up (Roth et al., 2001) as well as by using reproductive procedures that do not require estrus detection, as fixed-time artificial insemination (Arechiga et al., 1998) and embryo transfer (Al-Katanani et al., 2002).

The purpose of this study was to evaluate in an Apennine area of Southern Italy, namely the province of Potenza, the magnitude of the effects exerted by HS on reproductive performance in high producing dairy cows, the consequent economic loss and the compliance of the THI for HS evaluations. The geographical area considered is characterized by a Mediterranean climate with mountain winter temperatures, hot summer and large diurnal temperature variations.

2 Materials and methods

2.1 Animals

Reproductive data from January 2008 to December 2012 were collected from a total number of 1743 Holstein

Friesian (HF) cows bred in three dairy farms (named A, B and C) in the province of Potenza. Cows were barn-housed throughout the year and milked twice a day. Average milk production in 305 days was 9656 ± 188 kg and ranged among farms from 9534 (Farm C) to 9873 (Farm B) kg. The voluntary waiting period varied between 40 and 45 days. Clinical veterinary assistance was provided by private veterinarians employed by the Basilicata Breeders' Association (ARA). Data were collected on the dates of birth, calving, insemination and culling. The pregnancy length was postulated to the last 284 days on the basis of the information provided by the Italian Holstein Friesian Association (ANAFI) and updated to 2012.

2.2 Estimation of reproductive parameters

Based on the above collected data, reproductive parameters were developed (Ferguson and Skidmore, 2013), as follows: number of conceptions evaluated per month on a per year basis (NCY). The conception date has been obtained by subtracting postulated pregnancy length (i.e., 284 days) from the calving date. The NCY was obtained by relating the number of conceptions on a month basis to the total conceptions per year. Number of heats detected per month on a per year basis (HDY) was calculated by relating the number of heats followed by an AI on a month basis to the total number of heats followed by AI detected each year. Conception Rate (CR) has been obtained by relating, on a month basis, the number of cows which conceived following an AI to the number of AI performed. Age at first calving (AFC), was the number of days from the birth to the first calving. Number of AI/pregnancy (NAIP) was the number of inseminations necessary to obtain a full term pregnancy. These data were related to the month of the previous calving. Number of days open (DO) was obtained by subtracting the postulated pregnancy length (i.e., 284 days) to the number of days between two consecutive parturitions (VanRaden et al., 2004). These data were related to the month of the first of the two parturitions.

2.3 Climate data

Daily weather records from 2008 to 2012 were obtained from the three most nearby meteorological stations (less than 3 km) located at the same altitude of the examined dairy farms. These records were used to estimate means, variances, and covariances of monthly minimum and maximum temperatures, minimum and maximum relative humidity, and to calculate the temperature-humidity index (THI), using the standard THI equation in which the maximum temperature (T) was combined with the minimum humidity (H) (Ravagnolo and Misztal, 2000), as follows:

$$\text{THI} = (((9/5)T) + 32) - ((11/2) - (11/2)H) / (((9/5)T) - 26) / 100$$

THI classes were ranged according to arbitrary intervals in order to simplify further data analysis. A total of 9 THI classes were obtained, as follows: < 70, 70–79, 80–89, 90–99, 100–109, 110–119, 120–129, 130–139, and > 140.

Weather data were retrieved from the archives of the Agenzia Lucana di Sviluppo ed Innovazione in Agricoltura (ALSIA).

2.4 Economic evaluation

An economic assessment of the reproductive efficiency decline due to HS can be mainly evaluated considering the lowering of fertility caused by a reduction in the HDY and CR as well as the increase in the NAIP and the DO. The lower HDY and CR result in lengthening of DO, whose economic consequences have been recently evaluated in The Netherlands (van Eerdenburg, 2008a). The factors included in this estimation were (1) the loss of milk with respect to the EU milk quota system; (2) the loss of income due to less calves born per year; (3) problems around calving, like mastitis, negative energy balance and related problems (this aspect is positive in the case of short calving intervals but became negative in the case of long calving intervals). The economic losses were put in relation to the productive level of the dairy farms and evaluated in relation to the calving interval, considering $365 - d = \text{day } 0$ for economic evaluation (van Eerdenburg, 2008a). A multiple regression linear analysis was performed by SigmaPlot (SigmaPlot for Windows, 11.0 release) on the values estimated by van Eerdenburg ($R = 0.974$; $P < 0.001$) in order to obtain a model that could be adapted to our analysis. In particular

$$\text{Economic loss} = 42.9 - (0.460Y) + (0.245D)$$

where Y = average production of the dairy farm and D = calving interval – 365 days.

For our economic evaluation, the cost of semen doses was not considered since it varied largely in relation to managerial choices.

2.5 Statistical analysis

Statistical analysis was performed using Linear Regression and ANOVA (Systat 11.0 release) and including variables as year and farm in the model. Season variations were evaluated on a monthly basis. Before statistical processing, all parameters, expressed as annual incidence

rate, were arcsine transformed before assessing the homogeneity of variance. Pairwise mean differences were evaluated by Fisher's least-significant-different (LSD) test. Data are presented as least squares means and standard deviations.

3 Results

The analysis of climate data did not reveal significant differences among the evaluated years. However, a farm effect was found ($P < 0.05$). During the hottest months (i.e., June, July and August) Farms A and C showed, respectively, the lowest minimum temperature (Farm A = 8.1 ± 1.5 °C vs Farm B = 11.6 ± 2.0 °C and Farm C = 11.0 ± 1.9 °C; $P < 0.01$) and the lowest maximum temperature (Farm C = 33.3 ± 2.1 °C vs Farm A = 37.6 ± 2.1 °C and Farm C = 38.6 ± 2.2 °C; $P < 0.01$). THI was significantly affected by the season, with a monthly variation ranging between 42 and 150, but it did not significantly vary among years and farms. High variability was also found in relation to the atmospheric temperature range (TR), i.e., a parameter obtained by the numerical difference between the daily minimum and maximum values of temperature calculated on a monthly basis. In particular, this parameter significantly ($P < 0.001$) changed in relation to either the farm or the year and increased ($P < 0.001$) together with THI. On annual basis, TR showed a typical curvilinear pattern with the lowest value in January (15.5 ± 5.0 °C), a progressive increase peaking in August (23.1 ± 3.4 °C) and again a decline up to December (18.0 ± 4.2 °C).

The analysis of calving data distribution clearly showed a seasonal pattern which did not strictly fit with climatic variations (data not shown). When NCY was evaluated in relation to THI, the patterns of these two parameters showed a mirror trend (Fig. 1). NCY was significantly affected by either THI ($P < 0.001$) or month ($P < 0.001$). Comparing the THI classes to NCY, a significant ($P < 0.01$) decrease was observed along with the increase of THI (Fig. 2); this relationship was expressed by a straight linear regression with $R = -0.437$ ($P < 0.001$).

The incidence of HDY showed a pattern similar to NCY when related to THI. This trend was significantly affected by both THI ($P < 0.04$; $R = -0.329$) and months ($P < 0.001$). CR showed a pattern that was grossly opposite to THI and

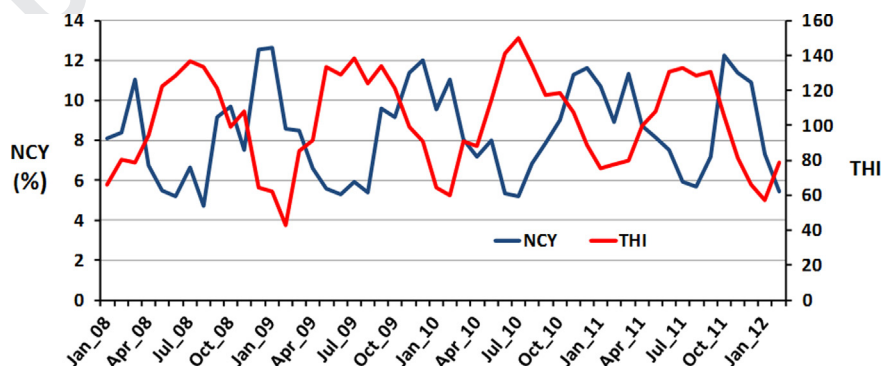


Fig. 1. Temporal trends of the number of conceptions evaluated per month on a per year basis (NCY) and temperature–humidity index (THI) evaluated as the average of the three farms examined.

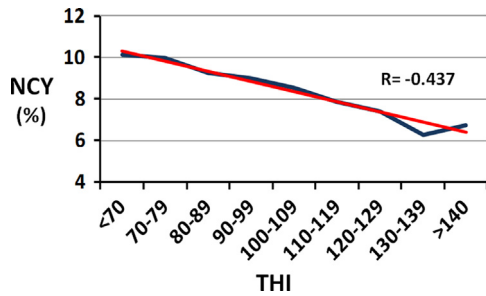


Fig. 2. Relationship between the number of conceptions evaluated per month on a per year basis (NCY) and temperature-humidity index (THI) independently of farm and year effects. The straight line represents the linear trend regression.

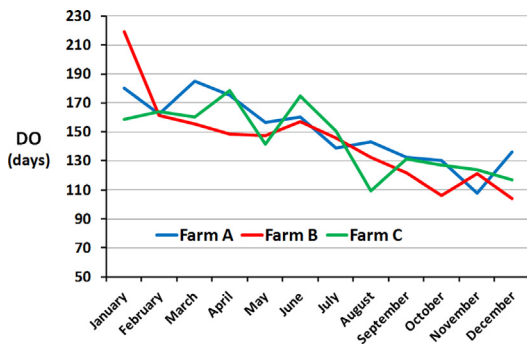


Fig. 3. Relationship between the number of days open evaluated in relation to the calving month (DO) and temperature-humidity index (THI) classes in the three farms evaluated independently on the year effect.

significantly affected by the year ($P < 0.003$). However, CR was not significantly affected by either months or THI although CR significantly decreased in the period between April and August with respect to the other months of the year (27.3% vs 35.4%; $P < 0.01$), with a sharp drop between 90 and 100 THI ($R = -0.303$).

AFC did not show statistically significant differences in relation to the year, month, THI and farms, ranging in relation to the latter parameter from 26 to 27 months.

Distribution of the NAIP was not significantly affected by THI but it was affected by either farm ($P = 0.003$) or month ($P < 0.001$). In particular, a lower number of AI was needed to obtain a pregnancy in the August–December period with respect to January–July (2.37 ± 0.72 vs 3.06 ± 0.86 ; $P < 0.001$).

Evaluating the number of DO in relation to the month of calving, a significant effect of the season ($P < 0.001$), but not of the THI, was found. In relation to the season, there was a significant reduction in the number of DO between August and December compared to January–July (123 ± 36 vs 163 ± 33 days; $P < 0.001$); the difference between these two periods ranged among farms from 36 to 45 days (Fig. 3).

In Table 1, the total economic loss attributable exclusively to the greatest number of DO observed in animals given birth in the first seven months of the year was evaluated and found to range among farms from 40.435 to 69.379 €/year.

Table 1

Estimation of economic loss produced by lengthening the calving interval, evaluated as number of days open, in the January–July (J–J) period compared to the August–December (A–D) period in the three dairy farms surveyed.

Farm	Days open		Cows calving on January–July period (n.)	Economic loss cow/day ^a (€)	Economic loss per year (€)
	J–J (days)	A–D (days)			
A	166 a	130 b	219	8.8	69.379
B	161 a	122 b	108	9.6	40.435
C	162 a	117 b	92	11.0	45.540

a,b ($P < 0.01$).

where Y = average production of the dairy farm and D = calving interval – 365 days.

^a On the basis of the estimated values from van Eerdenburg (2008a, 2008b) and calculated by using a model obtained by multiple linear regression analysis as follows: economic loss = $42.9 - (0.460Y) + (0.245D)$.

4 Discussion

The results of this study clearly demonstrated that the reproductive performance of dairy cows is greatly influenced by the season and that the THI allows only partly to highlight the relationship between HS and reproductive efficiency, as already suggested by other studies (Dikmen and Hansen, 2009). Similarly to Pregnancy Rate (Ferguson and Skidmore, 2013), NCY is affected by either HDY/heat detection rate or CR. Both these indicators of fertility are involved in determining the reproductive failures due to HS in cattle (Roth, 2008). Lower NCY during the hot season may be the result of either a decreased detection of estrus or a lower quality of gametes and embryos whose direct consequence is a lower CR. During the hottest period, the frequency of heats detected was significantly reduced, either when related to the season, expressed as months, or to THI. CR did not show statistically significant differences in relation to either the season or the THI. This may be due to the extension of the effects of HS even in months following the high environmental temperatures (Roth et al., 2001). In addition, the large atmospheric temperature range recorded in Apennine areas in the years analyzed may have weakened the negative effects of HS on the quality of gametes responsible for CR lowering, as recorded in other geographical areas (Roth, 2008). This information clearly indicates that the reduction in fertility observed during summer, as assessed by NCY, may be mainly due to a poor identification of animals in heat, as found in a study carried out in Argentina (Ferreira, 2013). This result shifts the focus to potential improvements in reproductive efficiency of the analyzed cows by using different strategies to correct the low HDY, as heat-watch, pedometer, or fixed-time artificial insemination.

AFC seemed not to be significantly affected by climate. This finding suggests a relative refractoriness of heifers to HS, as found in previous studies (West, 2003). Other studies (Wilson et al., 1998a) reported similar changes of ovarian function in heifers and lactating cows under HS-induced hyperthermia (Wilson et al., 1998b); however, heifers showed either a lower increase of the estradiol preceding estrus or did not show long estrous cycles when

1 compared to cows (Wilson et al., 1998a). Our data suggest
 3 that a good management of the distribution of calving
 5 dates of the heifers could be a reliable strategy to reduce
 7 the seasonal variability of milk production and/or to plane
 9 calving towards the period that provides the lowest
 11 number of DO.

13 Another seasonal effect on the reproductive activity is
 15 the difference in DO in relation to the calving date; in fact,
 17 a larger number of DO has been recorded in cows calved
 19 from January to July with respect to those calved in the
 21 August–December period. In this study, a possible expla-
 23 nation of this finding may be sought in the fact that the
 25 minimum mean number of DO, calculated on a monthly
 27 basis, was 116 days: the cows calving after January might
 29 have overcome their negative energy balance postpartum
 31 and rescued their reproductive activity after April, when
 33 temperatures responsible for HS occur. Conversely, those
 35 cows calved after July overcame this situation by matching
 37 their reproductive recovery with a more favorable climate.
 39 Since the animals calved in the period from January to July
 41 were on average 42.9% of the annually calved animals,
 43 it follows that the HS affected the calving interval with an
 45 average annual increase of 17.1 days. A similar bimodal
 47 distribution of DO has been found in a study aimed at
 49 evaluating a seasonal pattern of DO in relation to states
 51 and regions within the United States (Oseni et al., 2003).
 53 The discrepancy in the number of DO between the first
 55 and the second semester of the year was influenced by
 57 regional and seasonal variations; it increased in the South-
 59 east and partially in the Southwest and Midwest states
 61 together with HS increase.

NAIP follows trends similar to those observed for DO as
 expected due to the correlation between these two indi-
 cators ($R=0.679$; $P<0.001$). However, the increase of NAIP
 during the period from January to July provides further
 information on the underlying reasons for the DO increase
 that can be attributed to a CR decrease in addition to
 reduced HDY.

The economic loss due to DO (or calving interval) increase
 represents an issue considered by different authors though
 the estimates provided for these summary-indicators are
 quite discrepant (Gonzalez-Recio et al., 2004; Meadows et al.,
 2005). Methodological differences and economic context
 differences between areas and times are responsible for this,
 like frequently occurs in animal health economics (Seegers
 et al., 1998). In addition, few papers focused primarily on the
 impact of reproductive indicators, as the CR (Boichard, 1990)
 or the heat detection rate (de Vries and Conlin, 2003), and
 only some of these studies have considered the economic
 aspects of seasonality on reproductive failures, as evaluated
 under Finnish (Rajala-Schultz et al., 2000) or Florida (De
 Vries, 2004; Silva et al., 1992) conditions. To our knowledge,
 this is the first study on the economic impact of heat stress
 on dairy cows in Italy. In addition, the peculiar location of the
 dairy farms examined, i.e., the southern Apennines, a moun-
 tainous area relatively far from the sea and characterized by
 large daily temperature ranges throughout the year, gave this
 study a particular interest. Alongside the well-known pro-
 duction loss related with HS (West, 2003), the role of
 reproductive inefficiency in production loss is less obvious
 but equally significant. This latter damage extends several

weeks after temperatures reaching the values of thermal
 comfort. Even without considering the economic damages
 related to the cost of the semen, the economic loss is
 considerable and requires the referral of strategies to limit it.

In conclusion, heat stress caused many failures on
 reproductive activity in dairy cows reared in southern
 Apennines, i.e., a lower number of heats detected and
 conceptions as well as a larger number of days open.
 Strategies should be ranged to counteract the effects of
 heat stress on reproduction in order to attenuate the
 relevant economic loss caused by high environmental
 temperatures.

Author disclosure statement

The authors declare that no conflicting financial interests
 exist.

Acknowledgments

We thank Dr. Emanuele Scalcione and ALSIA (Agenzia
 Lucana di Sviluppo ed Innovazione in Agricoltura) for
 providing meteorological data as well as Dr. Stefano
 Mazziotta and ARA (Associazione Regionale Allevatori)
 Basilicata for providing reproductive data. We thank Dr.
 Paolo Sordino for his critical revision of the manuscript.
 Furthermore, we acknowledge the support, enthusiasm,
 and commitment of herd owners. This study has been
 financially supported by University of Basilicata.

References

- Al-Katanani, Y.M., Drost, M., Monson, R.L., Rutledge, J.J., Krininger 3rd, C.
 E., Block, J., Thatcher, W.W., Hanse, P.J., 2002. Pregnancy rates
 following timed embryo transfer with fresh or vitrified in vitro
 produced embryos in lactating dairy cows under heat stress condi-
 tions. *Theriogenology* 58, 171–182.
- Archiga, C.F., Staples, C.R., McDowell, L.R., Hansen, P.J., 1998. Effects of
 timed insemination and supplemental beta-carotene on reproduction
 and milk yield of dairy cows under heat stress. *J. Dairy Sci.* 81,
 390–402.
- Badinga, L., Thatcher, W.W., Diaz, T., Drost, M., Wolfenson, D., 1993. Effect
 of environmental heat stress on follicular development and steroi-
 dogenesis in lactating Holstein cows. *Theriogenology* 39, 797–810.
- Badinga, L., Thatcher, W.W., Wilcox, C.J., Morris, G., Entwistle, K.,
 Wolfenson, D., 1994. Effect of season on follicular dynamics and
 plasma-concentrations of estradiol-17-beta, progesterone and
 luteinizing-hormone in lactating Holstein cows. *Theriogenology* 42,
 1263–1274.
- Biggers, B.G., Geisert, R.D., Wetteman, R.P., Buchanan, D.S., 1987. Effect of
 heat stress on early embryonic development in the beef cow. *J. Anim.
 Sci.* 64, 1512–1518.
- Boichard, D., 1990. Estimation of the economic value of conception rate in
 dairy cattle. *Livest. Prod. Sci.* 24, 187–204.
- Caraty, A., Delaleü, B., Chesneau, D., Fabre-Nys, C., 2002. Sequential role of
 e2 and GnRH for the expression of estrous behavior in ewes.
Endocrinology 143, 139–145.
- De Rensis, F., Lopez-Gatiuz, F., Capelli, T., Molina, E., Techakumphu, M.,
 Scaramuzzi, R.J., 2008. Effect of season on luteal activity during the
 post partum period of dairy cows in temperate areas. *Animal* 2,
 554–559.
- De Vries, A., 2004. Economics of delayed replacement when cow
 performance is seasonal. *J. Dairy Sci.* 87, 2947–2958.
- de Vries, A., Conlin, B.J., 2003. Economic value of timely determination of
 unexpected decreases in detection of estrus using control charts. *J.
 Dairy Sci.* 86, 3516–3526.

- 1 Dikmen, S., Hansen, P.J., 2009. Is the temperature-humidity index the best
 3 indicator of heat stress in lactating dairy cows in a subtropical
 environment? *J. Dairy Sci.* 92, 109–116.
- 4 Ferguson, J.D., Skidmore, A., 2013. Reproductive performance in a select
 5 sample of dairy herds. *J. Dairy Sci.* 96, 1269–1289.
- 6 Ferreira, G., 2013. Reproductive performance of dairy farms in western
 7 Buenos Aires province, Argentina. *J. Dairy Sci.*
- 8 Gauly, M., Bollwein, H., Breves, G., Brugemann, K., Danicke, S., Das, G.,
 9 Demeler, J., Hansen, H., Isselstein, J., König, S., Loholter, M., Martin-
 10 sohn, M., Meyer, U., Potthoff, M., Sanker, C., Schroder, B., Wrage, N.,
 11 Meibaum, B., von Samson-Himmelstjerna, G., Stinshoff, H., Wren-
 12 zyski, C., 2013. Future consequences and challenges for dairy cow
 13 production systems arising from climate change in Central Europe – a
 14 review. *Animal* 7, 843–859.
- 15 Gonzalez-Recio, O., Perez-Cabal, M.A., Alenda, R., 2004. Economic value of
 16 female fertility and its relationship with profit in Spanish dairy cattle.
 17 *J. Dairy Sci.* 87, 3053–3061.
- 18 Hansen, P.J., Arechiga, C.F., 1999. Strategies for managing reproduction in
 19 the heat-stressed dairy cow. *J. Anim. Sci.* 77 (Suppl. 2), 36–50.
- 20 Igono, M.O., Bjotvedt, G., Sanford-Crane, H.T., 1992. Environmental profile
 21 and critical temperature effects on milk production of Holstein cows
 22 in desert climate. *Int. J. Biometeorol.* 36, 77–87.
- 23 Kadzere, C., Murphy, M., Silanikove, N., Maltz, E., 2002. Heat stress in
 24 lactating dairy cows: a review. *Livest. Prod. Sci.* 77, 59–91.
- 25 Kendall, P., Nielsen, P., Webster, J., Verkerk, G., Littlejohn, R., Matthews, L.,
 26 2006. The effects of providing shade to lactating dairy cows in a
 27 temperate climate. *Livest. Sci.* 103, 148–157.
- 28 Lopez-Gatiu, F., 2003. Is fertility declining in dairy cattle? A retrospective
 29 study in northeastern Spain. *Theriogenology* 60, 89–99.
- 30 Lucy, M.C., Savio, J.D., Badinga, L., De La Sota, R.L., Thatcher, W.W., 1992.
 31 Factors that affect ovarian follicular dynamics in cattle. *J. Anim. Sci.*
 32 70, 3615–3626.
- 33 Lussier, J.G., Matton, P., Dufour, J.J., 1987. Growth rates of follicles in the
 34 ovary of the cow. *J. Reprod. Fertil.* 81, 301–307.
- 35 Meadows, C., Rajala-Schultz, P.J., Frazer, G.S., 2005. A spreadsheet-based
 36 model demonstrating the nonuniform economic effects of varying
 37 reproductive performance in Ohio dairy herds. *J. Dairy Sci.* 88,
 38 1244–1254.
- 39 Meyerhoeffer, D.C., Wettemann, R.P., Coleman, S.W., Wells, M.E., 1985.
 Reproductive criteria of beef bulls during and after exposure to
 increased ambient temperature. *J. Anim. Sci.* 60, 352–357.
- Mihm, M., Baguisi, A., Boland, M.P., Roche, J.F., 1994. Association between
 the duration of dominance of the ovulatory follicle and pregnancy
 rate in beef heifers. *J. Reprod. Fertil.* 102, 123–130.
- Nardone, A., Ronchi, B., Lacetera, N., Ranieri, M.S., Bernabucci, U., 2010.
 Effects of climate changes on animal production and sustainability of
 livestock systems. *Livest. Sci.* 130, 57–69.
- Oseni, S., Misztal, I., Tsuruta, S., Rekaya, R., 2003. Seasonality of days open
 in US Holsteins. *J. Dairy Sci.* 86, 3718–3725.
- Picton, H., Briggs, D., Gosden, R., 1998. The molecular basis of oocyte
 growth and development. *Mol. Cell. Endocrinol.* 145, 27–37.
- Rajala-Schultz, P.J., Grohn, Y.T., Allore, H.G., 2000. Optimizing breeding
 decisions for Finnish dairy herds. *Acta. Vet. Scand.* 41, 199–212.
- Ravagnolo, O., Misztal, I., 2000. Genetic component of heat stress in dairy
 cattle, parameter estimation. *J. Dairy Sci.* 83, 2126–2130.
- Rispoli, L.A., Lawrence, J.L., Payton, R.R., Saxton, A.M., Schrock, G.E.,
 Schrick, F.N., Middlebrooks, B.W., Dunlap, J.R., Parrish, J.J., Edwards,
 J.L., 2011. Disparate consequences of heat stress exposure during
 meiotic maturation: embryo development after chemical activation
 vs fertilization of bovine oocytes. *Reproduction* 142, 831–843.
- Roth, Z., 2008. Heat stress, the follicle, and its enclosed oocyte: mechan-
 isms and potential strategies to improve fertility in dairy cows.
Reprod. Domest. Anim. 43 (Suppl. 2), 238–244.
- Roth, Z., Arav, A., Bor, A., Zeron, Y., Braw-Tal, R., Wolfenson, D., 2001.
 Improvement of quality of oocytes collected in the autumn by
 enhanced removal of impaired follicles from previously heat-
 stressed cows. *Reproduction* 122, 737–744.
- Seegers, H., Beaudeau, F., Fourichon, C., Barelle, N., 1998. Reasons for
 culling in French Holstein cows. *Prev. Vet. Med.* 36, 257–271.
- Silva, H.M., Wilcox, C.J., Thatcher, W.W., Becker, R.B., Morse, D., 1992.
 Factors affecting days open, gestation length, and calving interval in
 Florida dairy cattle. *J. Dairy Sci.* 75, 288–293.
- Smith, R.F., Dobson, H., 2002. Hormonal interactions within the hypothal-
 amus and pituitary with respect to stress and reproduction in sheep.
Domest. Anim. Endocrinol. 23, 75–85.
- Torres-Junior, J.d.S., Pires, M., De Sa, W., Ferreira, A.d.M., Viana, J.H.M.,
 Camargo, L.S.d.A., Ramos, A.d.A., Folhadella, I., Polisseni, J., De Freitas,
 C., 2008. Effect of maternal heat-stress on follicular growth and oocyte
 competence in *Bos indicus* cattle. *Theriogenology* 69, 155–166.
- van Eerdenburg, F.J., 2008a. Oestrus detection in dairy cattle – How to
 beat a bull – Introduction. *Vet. Q.* 30, 3–9.
- van Eerdenburg, F.J., 2008b. Possible causes for the diminished expression
 of oestrous behaviour. *Vet. Q.* 30, 79–100.
- Van Raden, P.M., Sanders, A.H., Tooker, M.E., Miller, R.H., Norman, H.D.,
 Kuhn, M.T., Wiggans, G.R., 2004. Development of a national genetic
 evaluation for cow fertility. *J. Dairy Sci.* 87, 2285–2292.
- West, J.W., 2003. Effects of heat-stress on production in dairy cattle. *J.*
Dairy Sci. 86, 2131–2144.
- Wilson, S.J., Kirby, C.J., Koenigsfeld, A.T., Keisler, D.H., Lucy, M.C., 1998a.
 Effects of controlled heat stress on ovarian function of dairy cattle. 2.
 Heifers. *J. Dairy Sci.* 81, 2132–2138.
- Wilson, S.J., Marion, R.S., Spain, J.N., Spiers, D.E., Keisler, D.H., Lucy, M.C.,
 1998b. Effects of controlled heat stress on ovarian function of dairy
 cattle. 1. Lactating cows. *J. Dairy Sci.* 81, 2124–2131.
- Wolfenson, D., Thatcher, W., Badinga, L., Savio, J., Meidan, R., Lew, B.,
 Braw-Tal, R., Berman, A., 1995. Effect of heat stress on follicular
 development during the estrous cycle in lactating dairy cattle. *Biol.*
Reprod. 52, 1106–1113.